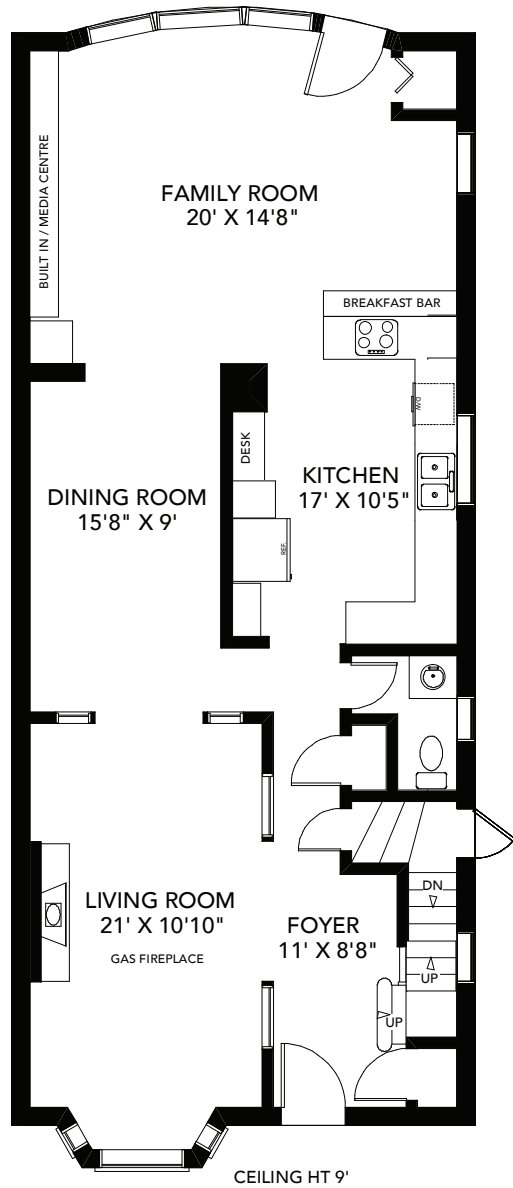


# 289 BERESFORD AVENUE

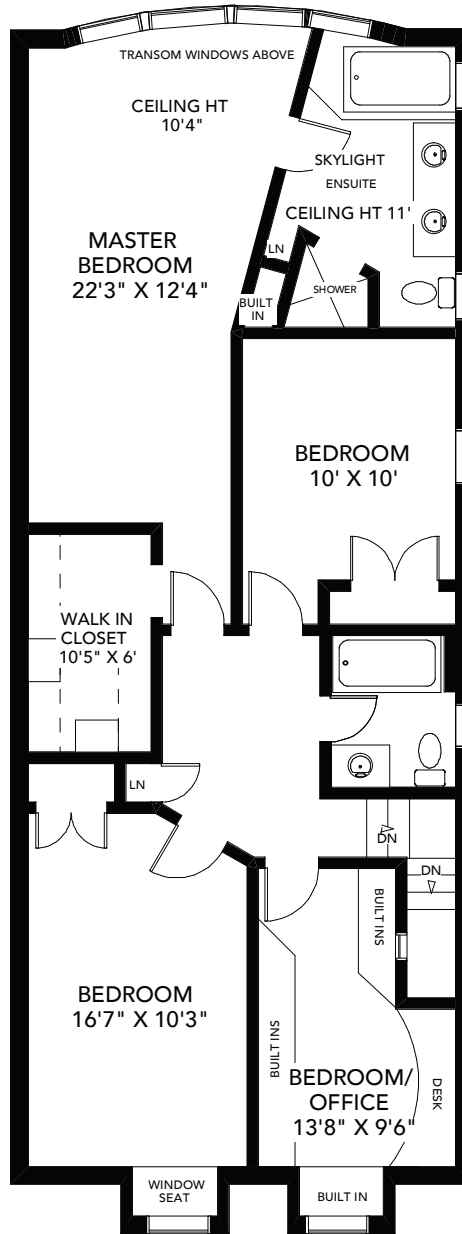
2,335 SQ FT ABOVE GRADE

**BABIAK**  
REAL ESTATE TEAM

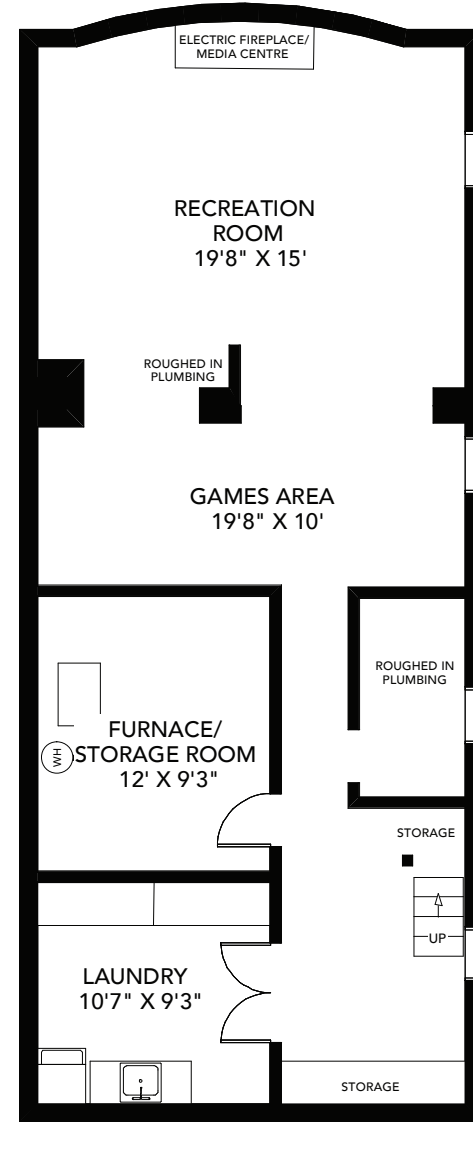
WALK OUT TO DECK  
21'6" X 20'



MAIN FLOOR  
APPROXIMATELY 1,135SQ FT



SECOND FLOOR  
APPROXIMATELY 1,200 SQ FT



LOWER FLOOR  
APPROXIMATELY 1,125 SQ FT

Note: Measurements & Calculations are approximate. Provided as a guideline only.