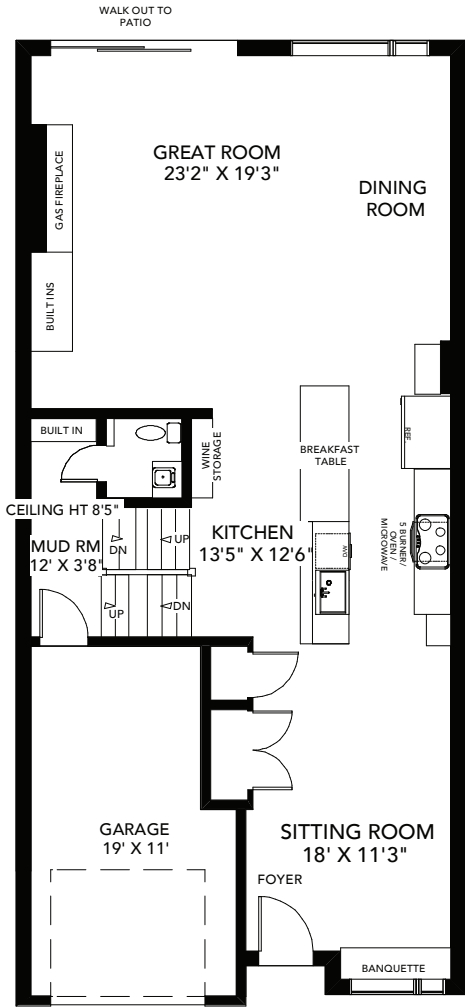


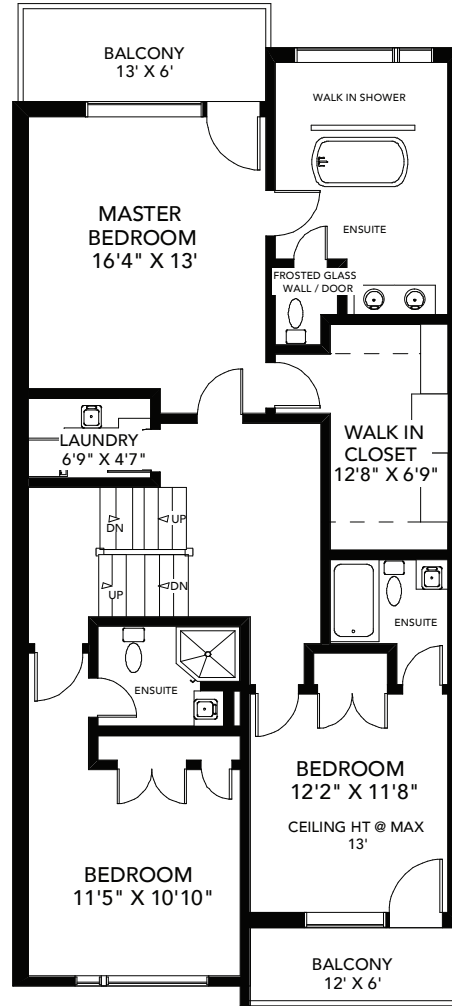
296 WINDERMERE AVENUE

TOTAL 2,650 SQ FT ABOVE GRADE

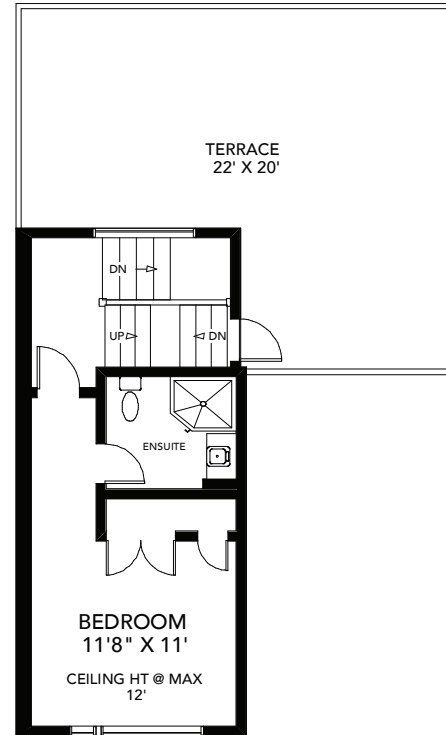
BABIAK
REAL ESTATE TEAM



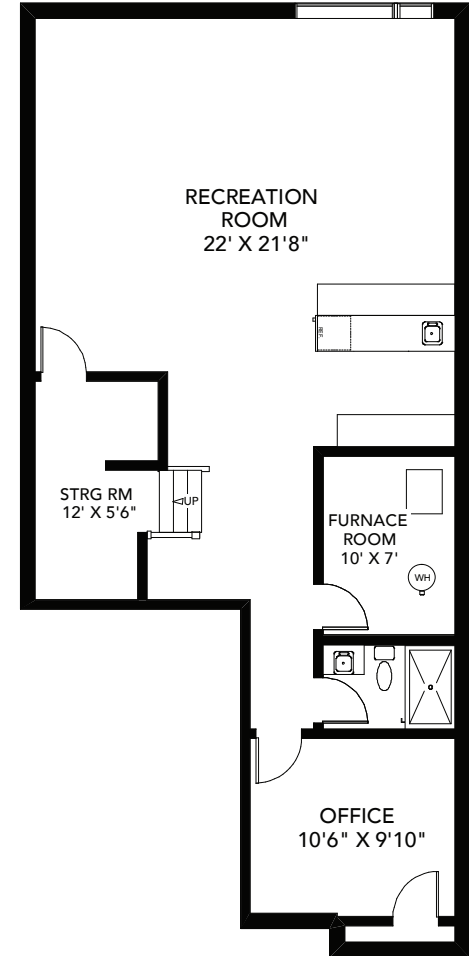
CEILING HT 10'3"
MAIN FLOOR
APPROXIMATELY 1,100 SQ FT



SECOND FLOOR
APPROXIMATELY 1,200 SQ FT



UPPER FLOOR
APPROXIMATELY 350 SQ FT



LOWER FLOOR
APPROXIMATELY 1,060 SQ FT

Note: Measurements & Calculations are approximate. Provided as a guideline only.