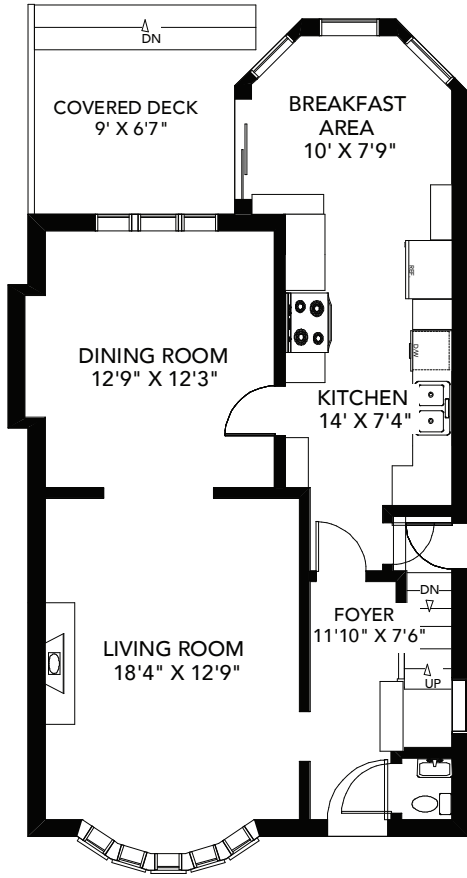


68 HUMBER TRAIL

TOTAL APPROXIMATELY 1,678 SQ FT ABOVE GRADE

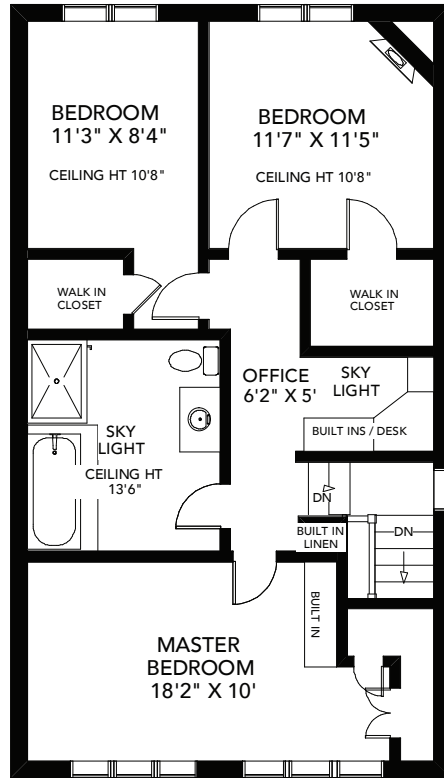
BABIAK
REAL ESTATE TEAM

DN TO STONE PATIO
C/W BUILT IN BBQ

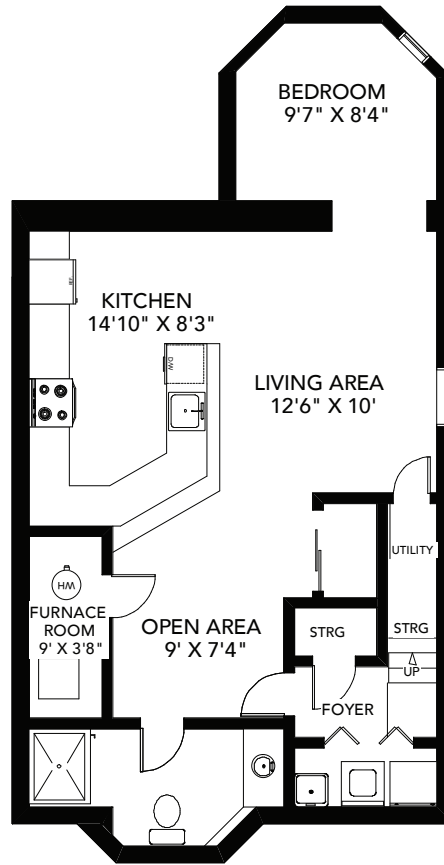


CEILING HT 8'4"

MAIN FLOOR

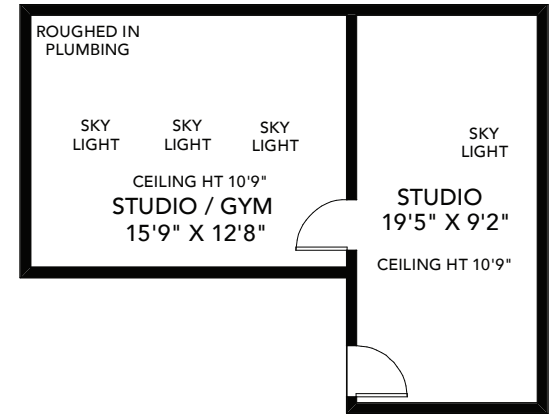


SECOND FLOOR



CEILING HT 7'

LOWER FLOOR



STUDIO

Note: Measurements & Calculations are approximate. Provided as a guideline only.