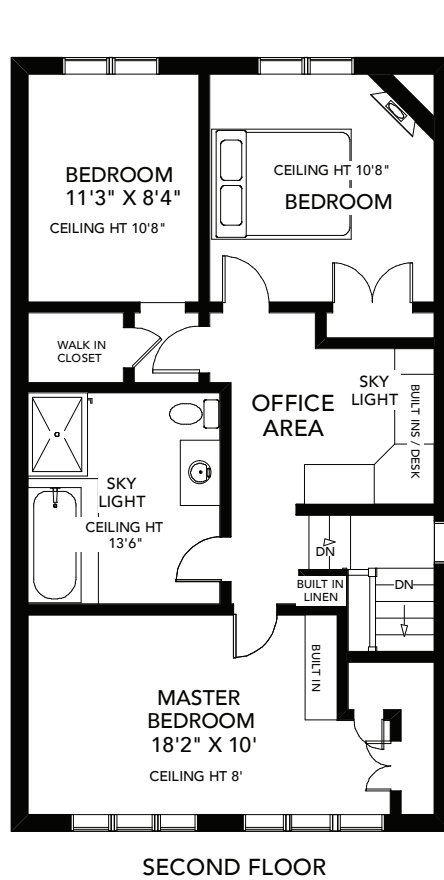
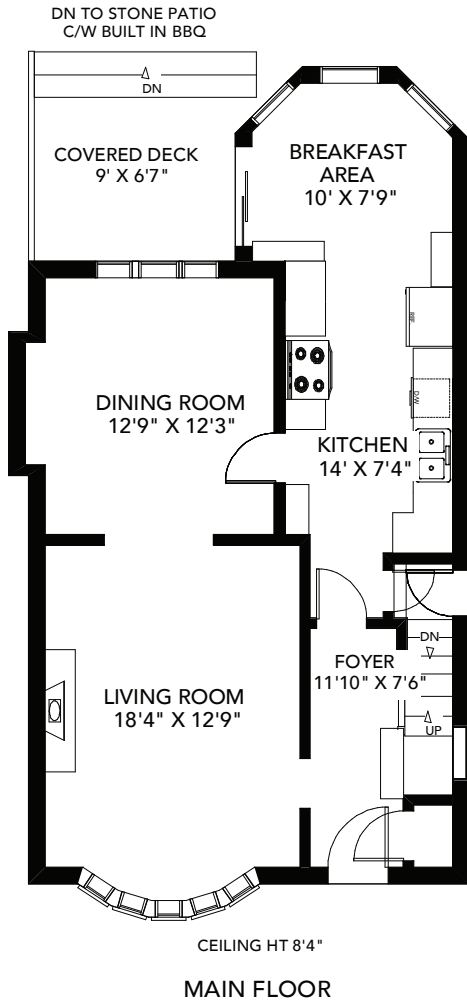


ALTERNATE CONCEPTUAL FLOOR PLAN

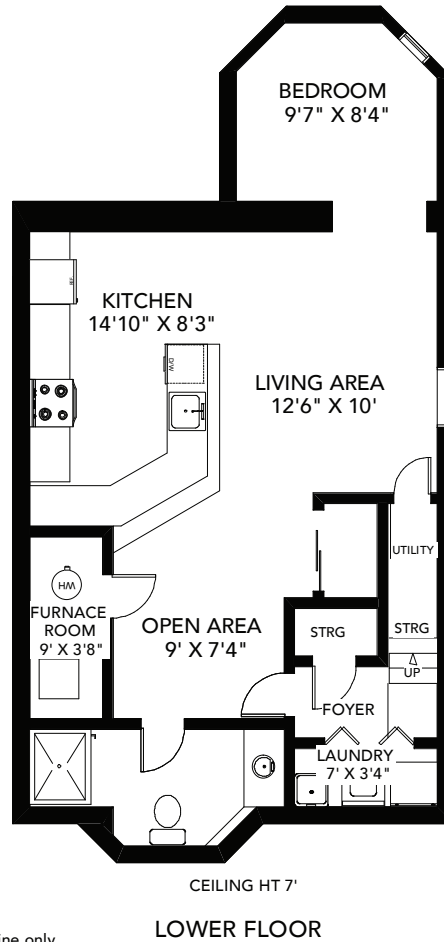
68 HUMBER TRAIL

TOTAL APPROXIMATELY 1,678 SQ FT ABOVE GRADE

Conceptual floor plan illustrates one possible design should a wall and closet be added to the current family room for conversion to a bedroom



Note: Measurements & Calculations are approximate. Provided as a guideline only.



BABIAK
REAL ESTATE TEAM

