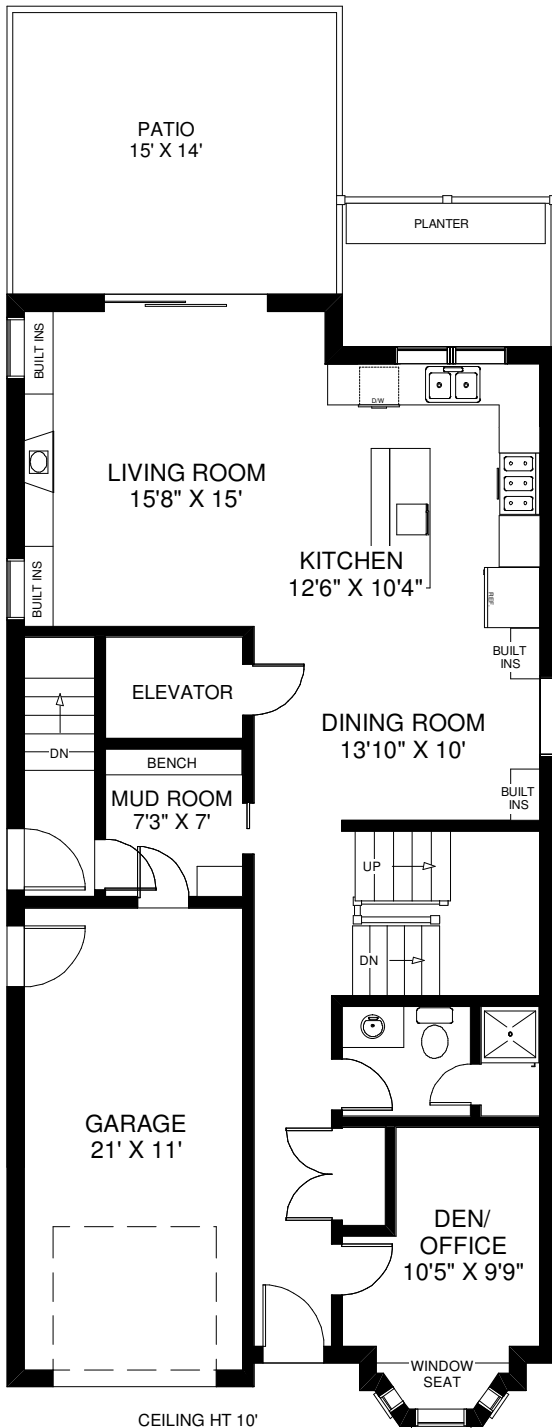
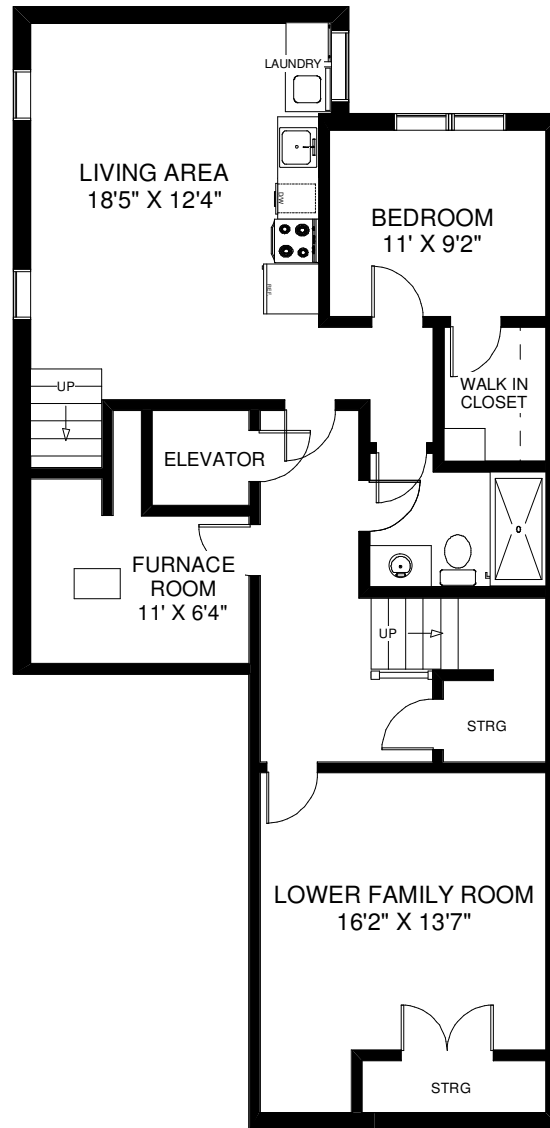


21 BABY POINT ROAD

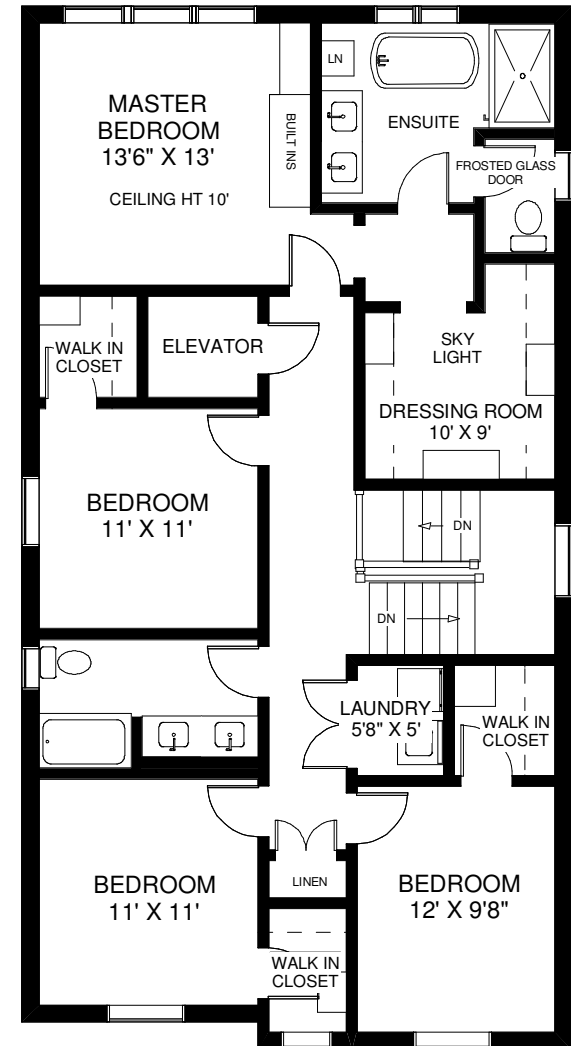
TOTAL 2,575 SQ FT ABOVE GRADE



CEILING HT 10'
MAIN FLOOR
APPROXIMATELY 1,180 SQ FT



CEILING HT 9'2"
LOWER FLOOR
APPROXIMATELY 1,170 SQ FT



CEILING HT 9'
SECOND FLOOR
APPROXIMATELY 1,395 SQ FT

Note: Measurements & Alkalizations are approximate. Provided as a guideline only.