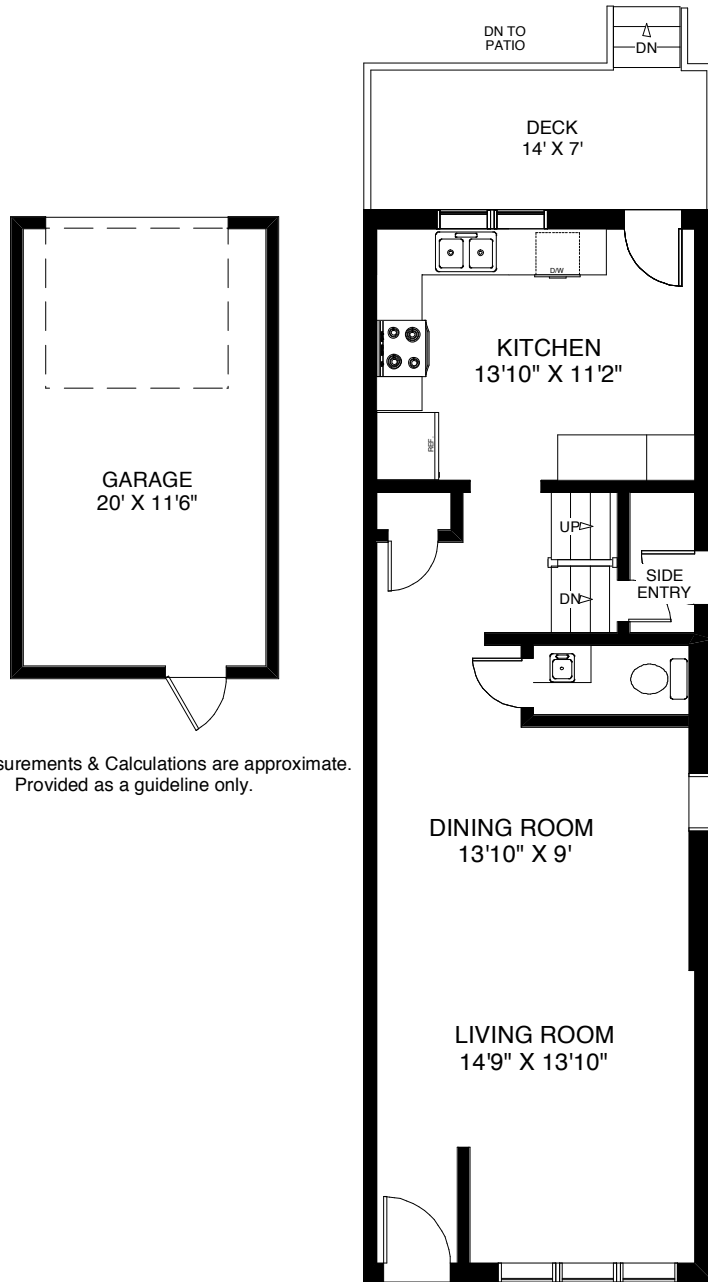


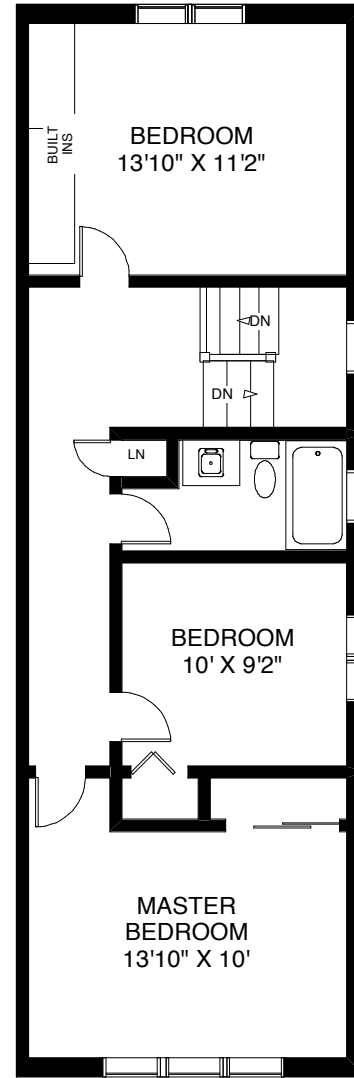
# 48 MICROBERTS AVENUE

TOTAL APPROXIMATELY 1,430 SQ FT ABOVE GRADE

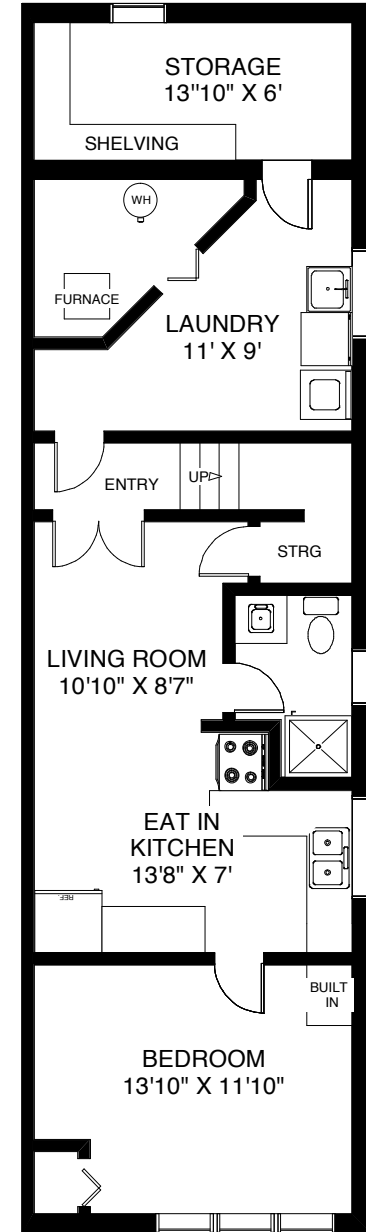


Note: Measurements & Calculations are approximate.  
Provided as a guideline only.

CEILING HT 8'  
**MAIN FLOOR**  
APPROXIMATELY 715 SQ FT



CEILING HT 8'  
**SECOND FLOOR**  
APPROXIMATELY 715 SQ FT



CEILING HT 7'6"  
**LOWER FLOOR**  
APPROXIMATELY 800 SQ FT