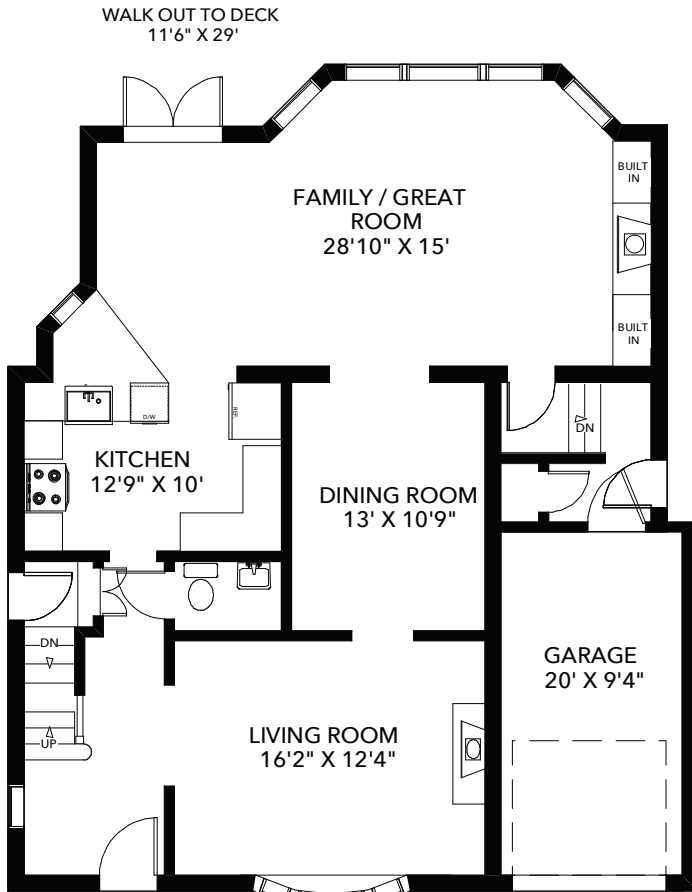


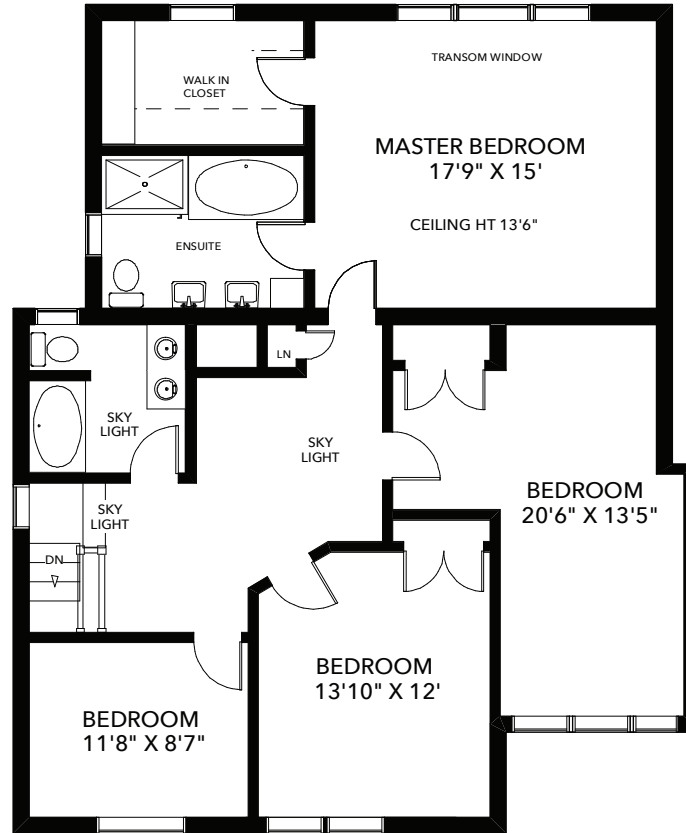
84 STRATH AVENUE

APPROXIMATELY 2,625 SQ FT ABOVE GRADE

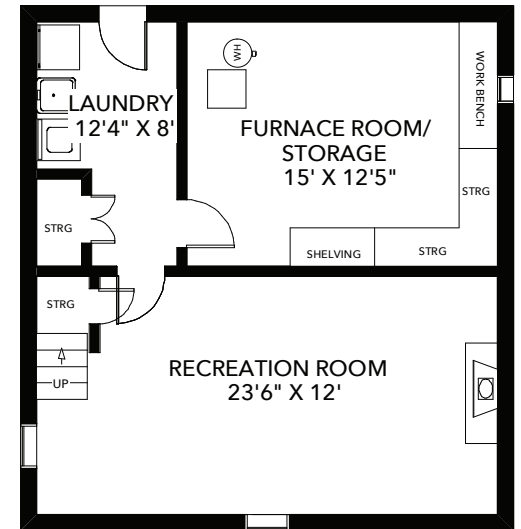
BABIAK
REAL ESTATE TEAM



CEILING HT 8'
MAIN FLOOR
APPROXIMATELY 1,225 SQ FT



CEILING HT 8'
SECOND FLOOR
APPROXIMATELY 1,400 SQ FT



CEILING HT 6'8"
LOWER FLOOR
APPROXIMATELY 700 SQ FT

Note: Measurements & Calculations are approximate. Provided as a guideline only.